

**PURAVANKARA**



**ZRICKS** REALTY



**YOUR 55 ACRES OF  
GREEN SANCTUARY IN  
THE HEART OF CHENNAI**

**PURVA WINDERMERE  
PALLIKARANAI**

[www.Zricks.com](http://www.Zricks.com)

WELCOME TO THE  
NEW ASHOK NAGAR  
OF CHENNAI.

WELCOME TO  
AN ELITE ENCLAVE  
SPREAD OVER 55 ACRES

Yes! You've heard it right. A neighbourhood that's emerging as the hottest destination not only in Chennai but is rated as the best even in India. Welcome to Purva Windermere at Pallikaranai, a grand lifestyle spread over 55 acres, yet surprisingly close to the bustling city center of Velachery. This award winning project from Puravankara speaks of spacious homes. Homes that promise you a lifestyle that's truly international in terms of size and the number of amenities.

Purva Windermere is well connected to Airport and the IT Corridor, giving you the strategic advantage of being closer to places you happen to frequent in day. From the best of malls and hospitals to multiplexes and schools, you'll find it all close by. As for amenities, the project has two world-class clubhouses catering to the varied needs of your loved ones. In fact, you'll be spoilt by the choice of facilities available in this project.



ZRICKS

A HOME SO  
GREEN THAT  
THE TROUBLES  
OF THE CITY WILL  
SEEM LIKE A  
DISTANT DREAM.

To begin with, you're cordoned off from the main road, by layers of green cover. From tree-lined avenues to landscaped gardens and the adjacent lake, the whole ambience here seems like a serene suburb, though you're in the middle of the city.

Enjoy quiet walks in solitude, amidst tweeting birds and sentinel trees. Ponder on happy thoughts from the comfort of your park bench. Take your pet for a stroll in the paw park...catch up with your neighbors and their pets as well. In a city so busy, it pays to live in a home that's more like a getaway.

ZRICKS



ZRICKS

**PURVA**  
*windermere*  
AN ELITE ENCLAVE

**ZRICKS**.COM



ZRICKS

CLUBHOUSE



AQUAMARINE CENTER







## INDOOR FACILITIES AT LAKESIDE LEISURE & AQUAMARINE CENTER

- Aerobics/Yoga Room
- Billiards
- Squash Court
- Table Tennis Room
- Cards Room/ Indoor Games
- Entertainment Centre
- Gymnasium
- Health Club
- Swimming Pool
- Multipurpose Hall
- Joggers Track
- Children's Play Area
- Provision for Restaurant
- Provision for Parlours
- Provision for Super Market

### Outdoor facilities

- Basketball Court
- Tennis Court
- Volleyball Court
- Fun and Frolic Zone
- Well- lit Landscaped Garden



**ZRICKS**.COM

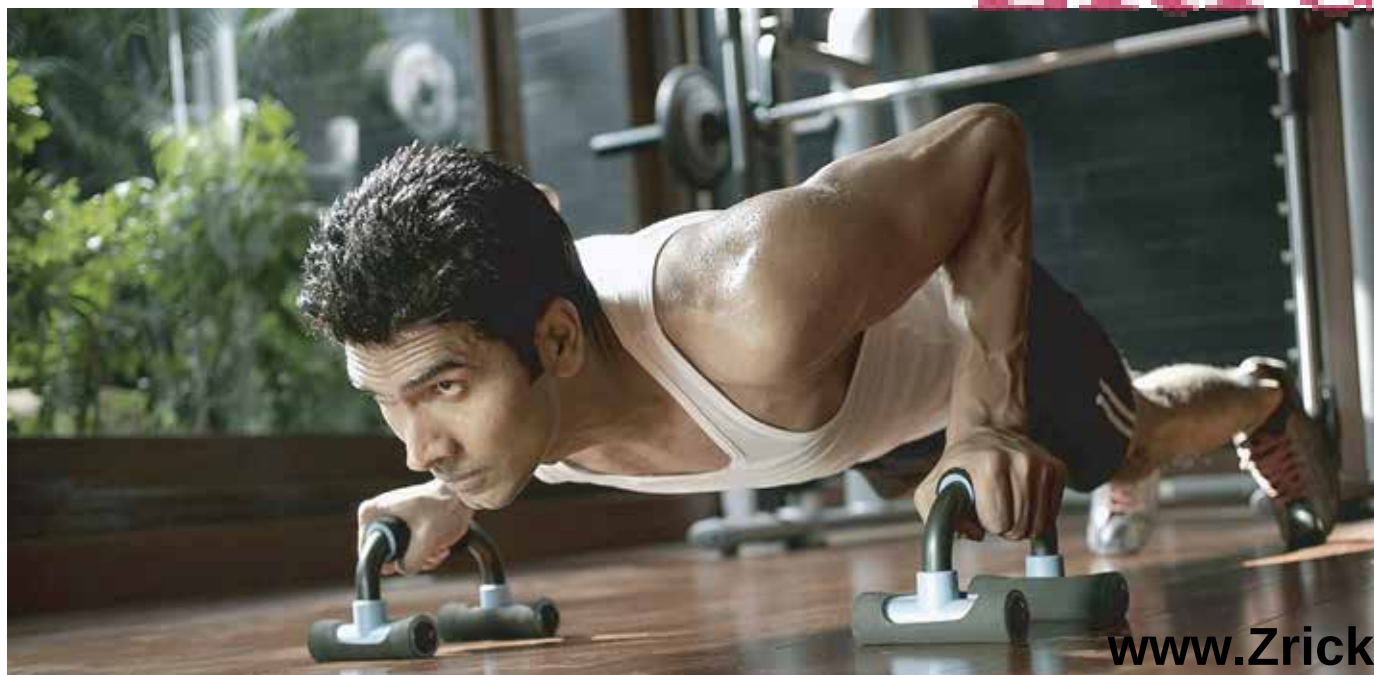
WE TAKE LEISURE TO  
THE NEXT LEVEL.

A LEVEL AT WHICH YOU  
FEEL THOROUGHLY  
PAMPERED.

Leisure at Purva Windermere is a serious pursuit. And on this count, we haven't left anything to chance. Experience our indoor facilities at the Lakeside and Aquamarine center. Spend a few minutes improving your shots at the squash court or the pool table. If kids are running haywire at home, send them packing to the children's play area. For their energy can't be kept bottled up for long. And meanwhile, remember to send your hubby to the health club, lately he has been piling on weight at the wrong places.

In fact, the indoor activities over here are many. Swimming pool to table tennis to cards room, pick an indulgence of your choice. Then there are facilities like the supermarket, parlours and a restaurant for your everyday needs. Need to spend time outdoors? Well, you've an array of amenities to spend some quality time. From basketball to tennis court to a well-lit landscaped garden...there are enough places to socialize with your friends and family.

ZRICKS





THE IMAGES USED IN THE BROCHURE ARE ONLY INDICATIVE

**ZRICKS**.COM



[www.Zricks.com](http://www.Zricks.com)

# LOCATION MAP



PROXIMITY	
Velachery MRTS	: 6.0 km
OMR	: 6.0 km
Velachery	: 7.0 km
Guindy	: 9.0 km
Airport	: 10.0 km
Tamaram	: 10.0 km
Tidel Park	: 12.0 km
Adyar	: 13.0 km

# IN YOUR NEIGHBOURHOOD

## EDUCATIONAL INSTITUTES

Satyabhama University |  
St. Joseph College of Engineering |  
Jain Engineering College |  
Mohd Sathak Engineering College |  
KCG college of Technology |  
Apple Kids | Global Kids |  
Christ The King School |  
Zigma Matriculation School |  
BS Matriculation School |  
St. Joseph's Matriculation School |  
DAV School | PSBB Millennium |  
Headstart | Bharathi Vidyalaya |  
Boaz Matriculation |  
Magdalene Matriculation |  
PRINCE Sri Venkateshwara  
Padmavathy Engineering College |  
PRINCE Dr. K. Vasudevan College of  
Engineering and Technology |  
Quaid-E-Milleth College For Men |  
New Prince Sri Bhavani Arts &  
Science College | Bharani Swathi  
College of Physiotherapy |  
Bharani Swathi College of Arts and  
Science | Balaji Dental College |  
Jerusalem College of Arts and Science

## HOSPITALS

Kamakshi Hospital | Global Hospitals

## SHOPPING CENTRES

City Super Market | Nilgris | More |  
Reliance Fresh | Sekar Stores |  
Food World | Ambal Stores | Hot Breads |  
Gupta Bhavan | Shanmugam Stores

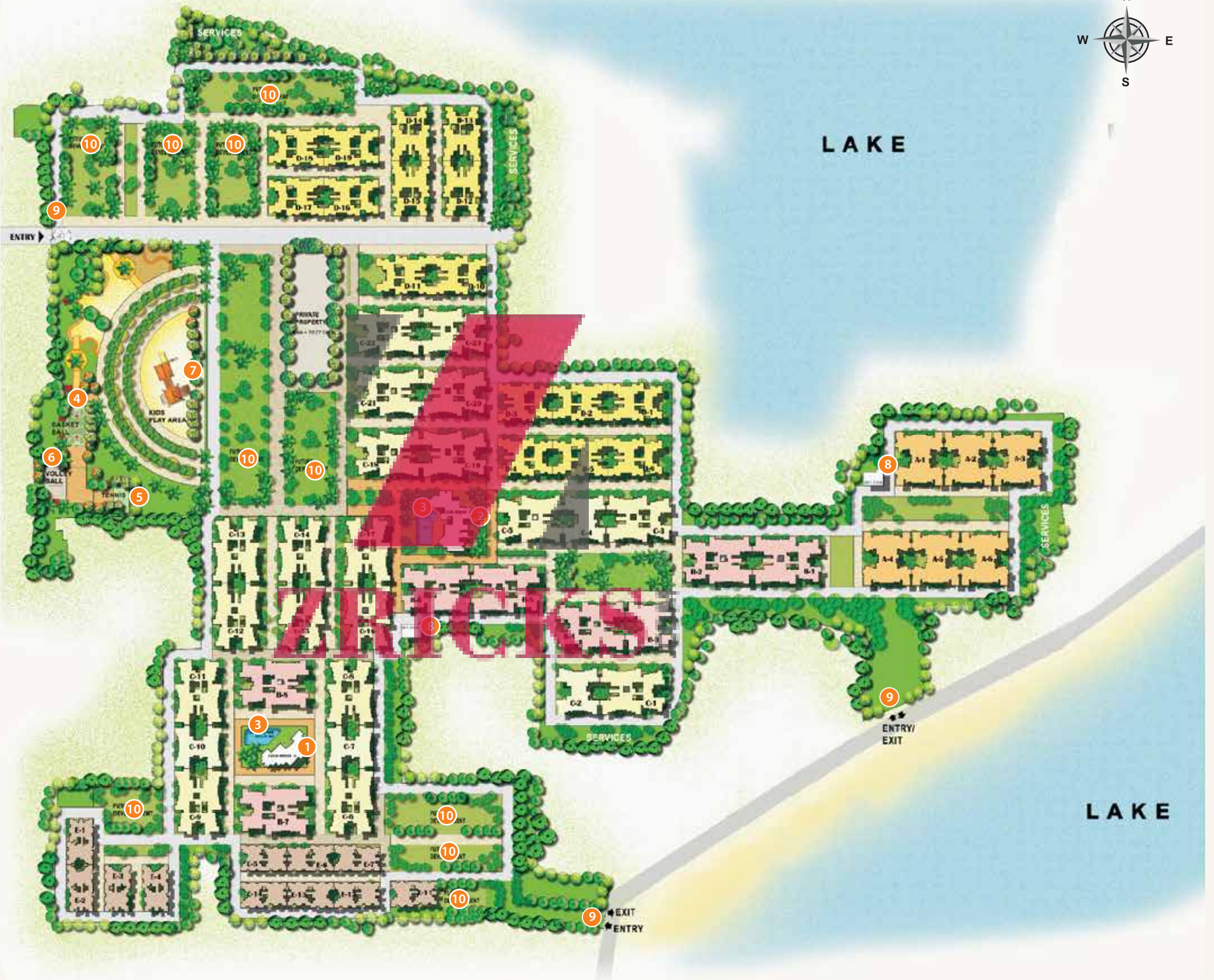
## COMPANIES

American Megatrends India | Vestas |  
Mahindra Satyam | HCL Technologies |  
Tata Consultancy Services |  
Accenture India | TECCI Park |  
Wipro Technologies |  
Cognizant Technology Solutions |  
Scope International | Photon Infotech |  
Polaris Software Lab | Infosys | Siemens |  
Ford | Sutherland

## HOTELS, RESORTS AND EATERIES

Cafè Coffee Day | Dominos | Asiana Hotel  
| Gateway Hotel | KFC | McDonalds

# MASTER PLAN



## LEGEND

- 01. Aquamarine Centre
- 02. Lakeside Leisure
- 03. Swimming Pool
- 04. Basketball Court
- 05. Tennis Court
- 06. Volleyball Court
- 07. Fun and Frolic Zone
- 08. Provision for Supermarket
- 09. Entry and Exit Points
- 10. Future Development

- Type A
- Type B
- Type C
- Type D
- Type E

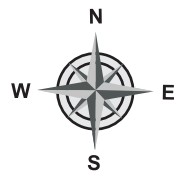
MASTER PLAN IS SUBJECT TO CHANGE

# FLOOR PLAN

TYPE - D16 & D19  
2 BHK



Type - D16 & D19			
Unit Series	Configuration	Size(sft.)	Classification
101	2 BHK	1255	Premium
102	2 BHK	1255	Premium
103	2 BHK	1243	Premium
104	2 BHK	1254	Premium
105	2 BHK	1254	Premium
106	2 BHK	1243	Premium

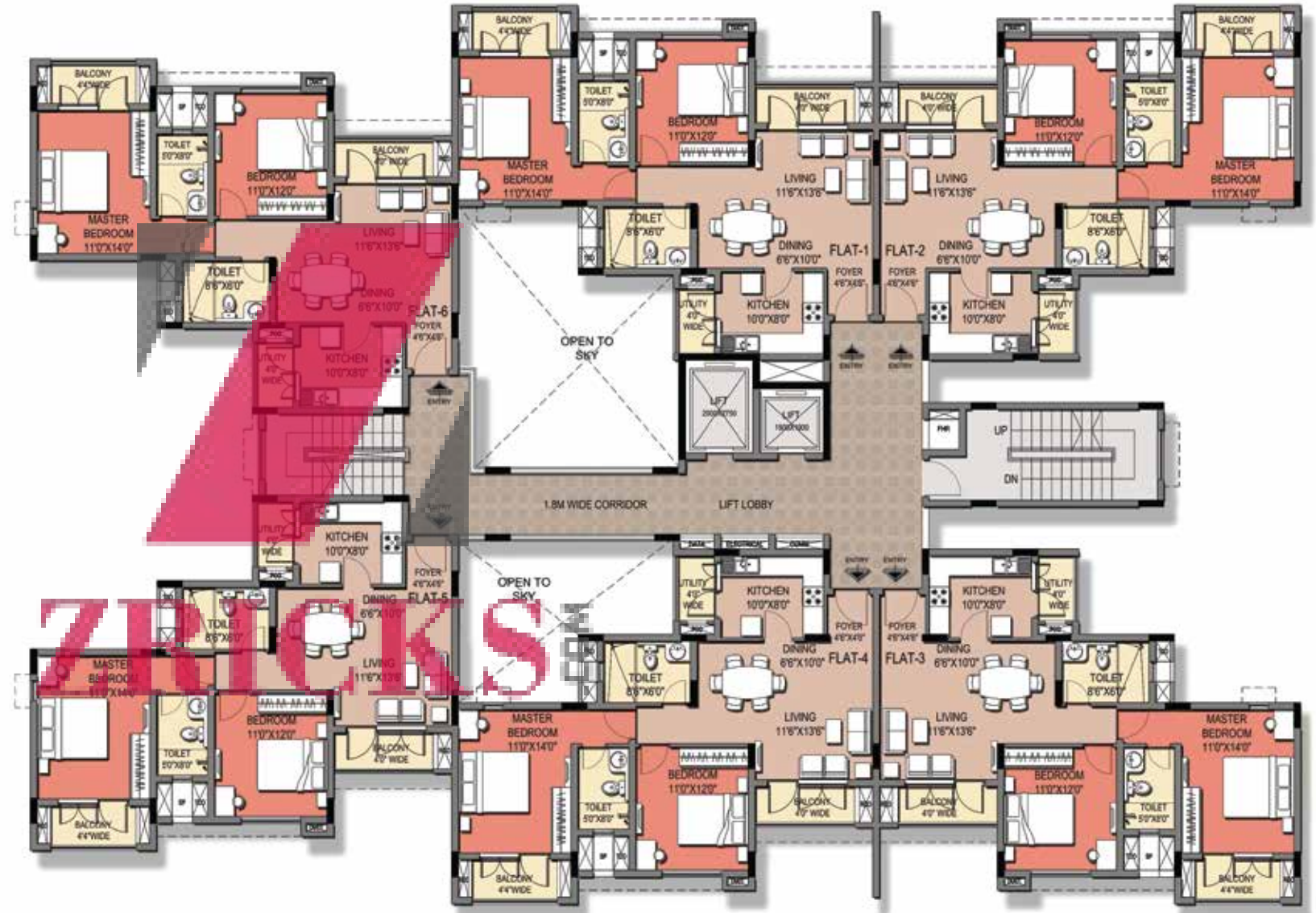
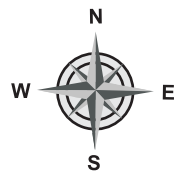


# FLOOR PLAN

## TYPE - D17 & D18 2 BHK



Type - D17 & D18			
Unit Series	Configuration	Size(sft.)	Classification
101	2 BHK	1243	Premium
102	2 BHK	1254	Premium
103	2 BHK	1254	Premium
104	2 BHK	1243	Premium
105	2 BHK	1255	Premium
106	2 BHK	1255	Premium





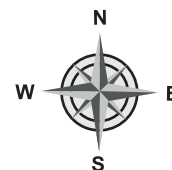
# FLOOR PLAN

## TYPE - C18 & C22 3R BHK



Type - C18			
Unit Series	Configuration	Size(sft.)	Classification
101	3 BHK	1929	Premium
102	3 BHK	1943	Premium
103	3 BHK	1943	Super Premium
104	3 BHK	1922	Super Premium
105	3 BHK	1944	Super Premium
106	3 BHK	1944	Premium

Type - C22			
Unit Series	Configuration	Size(sft.)	Classification
101	3 BHK	1929	Premium
102	3 BHK	1943	Premium
103	3 BHK	1943	Premium
104	3 BHK	1922	Premium
105	3 BHK	1944	Premium
106	3 BHK	1944	Super Premium



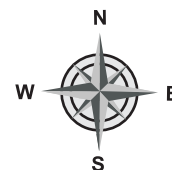
# FLOOR PLAN

## TYPE - C19 & C23 3R BHK



Type - C19			
Unit Series	Configuration	Size(sft.)	Classification
101	3 BHK	1944	Premium
102	3 BHK	1944	Super Premium
103	3 BHK	1922	Super Premium
104	3 BHK	1943	Super Premium
105	3 BHK	1943	Premium
106	3 BHK	1929	Premium

Type - C23			
Unit Series	Configuration	Size(sft.)	Classification
101	3 BHK	1944	Super Premium
102	3 BHK	1944	Premium
103	3 BHK	1922	Premium
104	3 BHK	1943	Premium
105	3 BHK	1943	Premium
106	3 BHK	1929	Premium



# FLOOR PLAN

## TYPE - A1 - A6 (1st to 4th Floor) 4 BHK



Type - A1			
Unit Series	Configuration	Size(sft.)	Classification
101 - 401	4 BHK	2712	Super Premium
102 - 402	4 BHK	2710	Super Premium
103 - 403	4 BHK	2710	Premium
104 - 404	4 BHK	2712	Super Premium

Type - A2 & A3			
Unit Series	Configuration	Size(sft.)	Classification
101 - 401	4 BHK	2712	Super Premium
102 - 402	4 BHK	2710	Super Premium
103 - 403	4 BHK	2710	Premium
104 - 404	4 BHK	2712	Premium

Type - A4			
Unit Series	Configuration	Size(sft.)	Classification
101 - 401	4 BHK	2712	Super Premium
102 - 402	4 BHK	2710	Premium
103 - 403	4 BHK	2710	Premium
104 - 404	4 BHK	2712	Premium



Type - A5 & A6			
Unit Series	Configuration	Size(sft.)	Classification
101 - 401	4 BHK	2712	Premium
102 - 402	4 BHK	2710	Premium
103 - 403	4 BHK	2710	Premium
104 - 404	4 BHK	2712	Premium



# FLOOR PLAN

## TYPE - A1 - A6 (5th to 7th Floor) 4 BHK



Type - A1			
Unit Series	Configuration	Size(sft.)	Classification
501 - 701	4 BHK	2693	Super Premium
502 - 702	4 BHK	2691	Super Premium
503 - 703	4 BHK	2691	Premium
504 - 704	4 BHK	2693	Super Premium

Type - A2 & A3			
Unit Series	Configuration	Size(sft.)	Classification
501 - 701	4 BHK	2693	Super Premium
502 - 702	4 BHK	2691	Super Premium
503 - 703	4 BHK	2691	Premium
504 - 704	4 BHK	2693	Premium

Type - A4			
Unit Series	Configuration	Size(sft.)	Classification
501 - 701	4 BHK	2693	Super Premium
502 - 702	4 BHK	2691	Premium
503 - 703	4 BHK	2691	Premium
504 - 704	4 BHK	2693	Premium



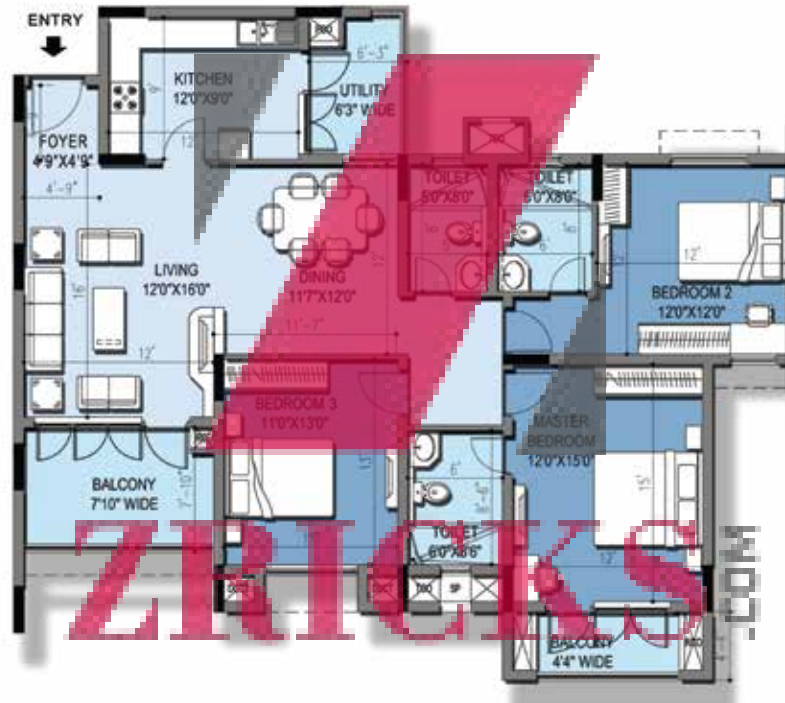
Type - A5 & A6			
Unit Series	Configuration	Size(sft.)	Classification
501 - 701	4 BHK	2693	Premium
502 - 702	4 BHK	2691	Premium
503 - 703	4 BHK	2691	Premium
504 - 704	4 BHK	2693	Premium



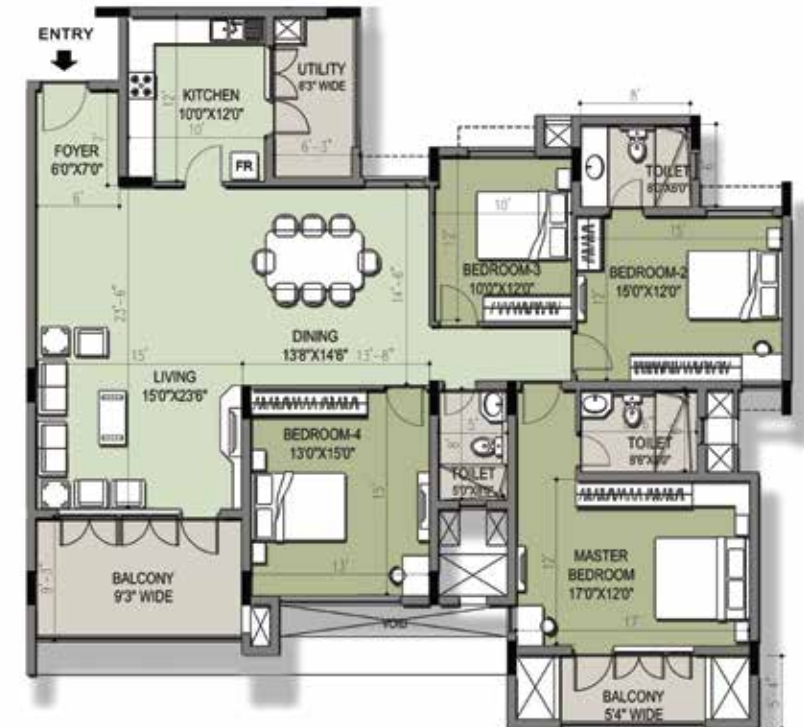
# UNIT PLANS



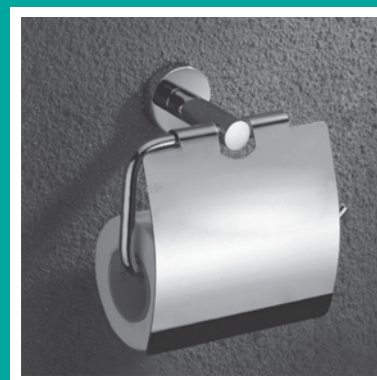
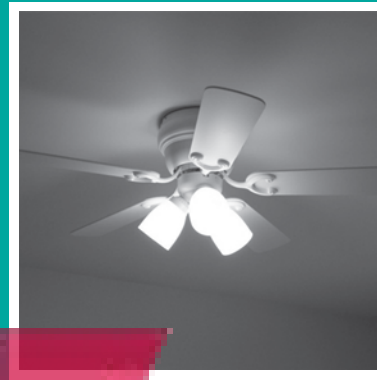
2 BHK - 1255 sq. ft.



3 BHK - 1944 sq. ft.



4 BHK - 2710 sq. ft.



Images shown are indicative only

# PROJECT SPECIFICATIONS

## STRUCTURE:

- RCC framed structure

## LOBBY:

- Elegant ground floor lobby with imported marble or highly polished granite or engineered marble flooring

## APARTMENT FLOORING:

- Vitrified tiles in living, dining, bedrooms, passages leading to bedrooms and in balcony of living and dining area

## KITCHEN & UTILITY:

- Vitrified tile flooring in kitchen and utility area
- Vitrified or ceramic tile dado up to 2' ht above kitchen counter
- Highly polished granite for kitchen counter top
- Single bowl, single drain stainless steel sink in 1 BHK and double bowl single drain stainless steel sink in 2 BHK apartments with premium quality hot and cold water basin mixer.
- Provision for water purifier above the drain board

## BATHROOMS:

- Anti skid/matt ceramic designer tile flooring
- Colored glazed/matt finished designer tiles up to the false ceiling
- Master bathrooms - Glass partition for shower area with good quality vitreous ware granite/marble counter-top wash basin with hot and cold water mixer
- Common bedroom bathroom (2 BHKs) - Good quality vitreous ware granite/marble counter-top wash basin with bottle trap/pedestal
- All bathroom are fitted with wall mounted EWC with premium quality CP fittings and sanitary fixtures.

## DOORS:

- Main door – Engineered wooden door frame and shutter or HDF door with teak wood frame or equivalent brand with good quality hardware and security eye
- Bedroom doors – Engineered wooden door frame and shutter or HDF doors with teak wood frame or equivalent brand with good quality hardware
- Bathroom doors – Waterproofed (in side) flush door with hardwood frame or equivalent brand including good quality hardware and thumb turn lock
- Balconies for living and dining - Glazed French windows with heavy gauged UPVC/aluminum frames with sliding/hinged shutters
- Other balcony/utility door - Glazed door and window with UPVC/aluminum frames with sliding/hinged shutters

## WINDOWS:

- Heavy gauged aluminum/UPVC frames with glazed, sliding/hinged shutters with mild steel grills

## VENTILATORS:

- Heavy gauged, aluminum/UPVC with glazed, louvered/hinged/fix ventilators
- Provision for exhaust fan

## PAINTING:

- Acrylic/cement based paint and textured surfaces in selective places as per design for exterior fascia of the building
- Interior walls are painted in acrylic emulsion

## CEILINGS:

- POP/Polystyrene cornices in living, dining and in foyer

## BALCONY RAILINGS & STAIRCASE HANDRAILS:

- Mild steel railings as per architect's design

## ELECTRICAL:

- All electrical wiring is concealed with premium quality PVC conduits
- Adequate power outlets for lights, fans, exhaust-fans, call-bell, television points are provided in all bedrooms, living and dining area
- One AC point in all bedrooms and AC point provision in living and dining area
- Telephone and television connectivity in living area
- Provision for cable TV connection in living area
- 5 KW power for 2 BHK, and 3 KW for 1 BHK.

## ELEVATORS:

- Automatic passenger lifts are provided in each block with intercom facility connected to security cabin and D.G. backup

## DG POWER:

- Back-up for common area lighting, pumps and lifts.
- 2 KW for 2 BHK and 1 KW for 1 BHK.

## SECURITY SYSTEM & INTRA COMMUNICATION SYSTEM:

- Peripheral vigilance through CCTV/cameras and patrolling by security guards
- Gas leak detector in kitchen.
- Intra- communication facility among apartments and to security cabin within the complex

# PURAVANKARA

## Puravankara Projects Limited,

No. 7, LVR Center, Seshadri Road, Alwarpet, Chennai - 600 018.

**Site:** Surya Nagar, After Pallikaranai Govt High School,  
Velachery-Tambaram Main Road, Chennai - 600 100.

**Corporate Office:** 130/1, Ulsoor Road, Bangalore - 560042. **Ph: 1860 208 0000**

**Ph: +91 - 44 - 44 55 55 55,** www.puravankara.com, sales@puravankara.com

**BANGALORE:** Ph - +91- 80- 44 55 55 55

**COIMBATORE:** Ph - +91- 422- 44 55 55 55

**DELHI:** Ph - +91- 124- 44 55 55 55

**KOCHI:** Ph - +91- 484- 44 55 55 55

**DUBAI:** Ph - 800035703370

**KINGDOM OF SAUDI ARABIA:** Ph - 00- 966- 3- 8946459

## READY-TO-MOVE-IN PROJECTS ACROSS INDIA

**Purva High Crest,** Off Kanakapura Road, Bangalore

**Purva Gold Crest,** Off Kanakapura Road, Bangalore

**Purva Highland,** Off Kanakapura Road, Bangalore

**Sky Condos Series I** at the Highlands of Kanakapura Road, Bangalore

**Purva Venezia,** Yelahanka, Bangalore

**Purva Atria,** RMV IIInd Stage, Bangalore

**Purva Oceana,** Marine Drive, Kochi

**Purva GrandBay,** Marine Drive, Kochi

**Purva Eternity,** Kakkanad, Kochi

**Sky Condos Series I** at Eternity Kakkanad, Kochi

**Purva Moonreach,** On Seaport-Airport Road, Kochi

## ON-GOING PROJECTS ACROSS INDIA

**Purva Whitehall,** On Sarjapur Main Road, Bangalore

**Purva Skywood,** Off Sarjapur Road, Bangalore

**Purva Midtown Residences,** Off Old Madras Road, Bangalore

**Purva Platina,** RMV IIInd Stage, Bangalore

**Purva Season,** C.V. Raman Nagar, Bangalore

**Purva Sunflower,** at Rajajinagar, Bangalore

**Purva Skydale,** Off Sarjapur Road, Bangalore

**Purva Westend,** Hosur Road, Bangalore

**Purva Palm Beach,** Off Hennur Road, Bangalore

**The Sound of Water,** Off Bannerghatta Road, Bangalore

**Sky Condos Series I,** OMR, Chennai

**Purva Swanlake,** OMR, Chennai

**Purva Windermere,** Pallikaranai, Chennai

**Manhattan Condos,** Pallikaranai, Chennai

**Purva Bluemont,** Singanallur, Trichy Road, Coimbatore

**Purva Amaiti,** Singanallur, Trichy Road, Coimbatore



# ZRICKS

The images used are only indicative



The brochure is conceptual in nature and is by no means a legal offering. The promoters have the right to change, alter, delete or add any specification mentioned herein. For the latest information, please contact the sales representative. This is a copyright material for only Puravankara Projects Limited.

www.Zricks.com